

**TOSHIBA
MEDICAL**

*Infinix*TM
4DCT

ONE VISION



**SEAMLESS INTEGRATION OF CT AND ANGIOGRAPHY:
PLAN, TREAT, VERIFY IN ONE SETTING.**

Discover a more efficient alternative to cone-beam CT with Toshiba's InfinixTM-i 4DCT, which seamlessly integrates the interventional lab and CT for a paradigm shift in interventional workflow.

A Streamlined Workflow and Patient Experience

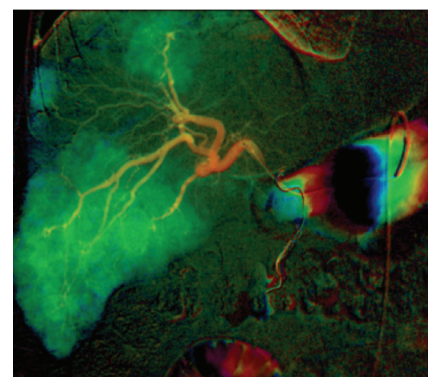
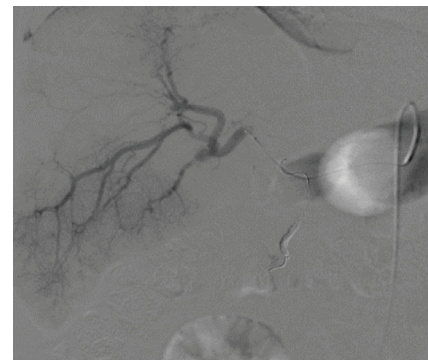
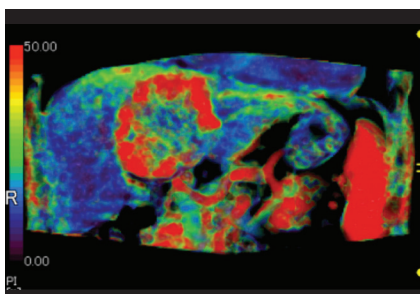
Infinix-i ^{4D}CT ONE VISION is the only combined angio-CT system that offers up to 16cm of CT coverage in one fast rotation*.

True CT instead of "CT-Like" imaging offers:

- Improved IQ due to reduced motion artifacts
- Whole Organ Body Perfusion and Volumetric CT Fluoroscopy
- Larger axial FOV
- Improved Low Contrast Detectability

CT images can assist in better visualization, improved device manipulation, and verification of results. As a result, efficiency may be increased.^{1,2,3}

Patient transfer between CT and interventional suites is eliminated. As a result the Infinix-i ^{4D}CT may help clinicians to reduce time-of and time-to procedure.



The combined room may be ideally suited for a variety of interventional radiology procedures, including:

- Transcatheter arterial chemoembolization (TACE)
- Selective internal radiation therapy (SIRT)
- Ablations (RFA, microwave)
- Transcatheter arterial embolization (TAE)

¹ Impact of a Unified CT Angiography System on Outcome of Patients with Hepatocellular Carcinoma, H. Toyoda, et.al., American Journal of Roentgenology, 2009;192:766-774.

² Angio CT for miscellaneous cases: complex RFA, drainages, A. Gogna, IR 2013 Angio CT Studies Update

³ Angio CT for SIRT, T. K. Hiong, IR 2013 Angio CT Studies Update

*0.275 second rotation time